



STOCK INVENTORY

RECYCLE BINS - FIRE CERTIFIED



Large Black
Leatherette
Liners: Blue & Black
14" x 9.25" x 12.5" Tapered
WB-0002-Blue Set
\$51.40 Ea. / \$308.40 Case of 6
*Fire Safety Certified



Standard Black Leather Bin
Liners: Blue & Black
WB-0001-Blue Set
\$43.50 Ea. / \$261.00 Case of 6



Large Mocha Brown
Leatherette
Liners: Green & Brown
14" x 9.25" x 12.5" Tapered
WB-0004 Brown
\$51.40 Ea. / \$308.40 Case of 6
*Fire Safety Certified



Standard Mocha Brown
Leatherette
Liners: Green & Brown
9.25" x 9.25" x 12.5" Tapered
WB-0314
\$43.50 Ea. / \$261.00 Case of 6
*Fire Safety Certified



Large Taupe Brown
Leatherette
Liners: Green & Brown
14" x 9.25" x 12.5" Tapered
WB-0002-BRN
\$51.40 Ea. / \$308.40 Case of 6
*Fire Safety Certified



Standard Taupe
Leatherette
Liners: Green & Brown
9.25" x 9.25" x 12.5" Tapered
WB-0001-BROWN
\$43.50 Ea. / \$261.00 Case of 6
*Fire Safety Certified



Large Mocha Brown Triple Liner
Leatherette
Liners: Green, Blue, Brown
14" x 9.25" x 12.5" Tapered
WB-0316
\$51.40 Ea. / \$308.40 Case of 6
*Fire Safety Certified



Large Black Triple Liner
Leatherette
Liners: Green, Blue, Brown
14" x 9.25" x 12.5" Tapered
WB-0315
\$51.40 Ea. / \$308.40 Case of 6
*Fire Safety Certified





STOCK INVENTORY

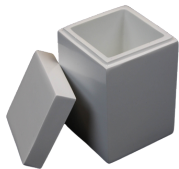
PACIFICA BATH COLLECTION - 100% POLY RESIN



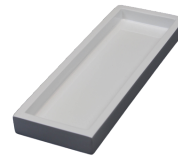
Pacifica Collection
100% Poly Resin Waste Bin
8.75" x 8.75" x 10"
WB-0300
Liner Sold Separately (WB-0304)
\$44.35 Ea. / \$177.30 Case of 4



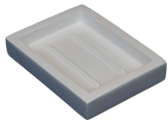
Pacifica Collection
100% Poly Resin Tissue Cover
5.5" x 5.5" x 5.75"
BS-0302
\$22.95 Ea. / \$183.35 Case of 8



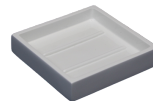
Pacifica Collection
100% Poly Resin Cotton Jar
2.5" x 2.5" x 4"
BS-0309
\$9.65 Ea. / \$231.45 Case of 24



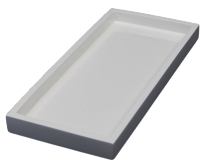
Pacifica Collection
100% Poly Resin Amenity Tray
10" x 3.5" x 0.875"
BS-0306
\$10.15 Ea. / \$81.05 Case of 8



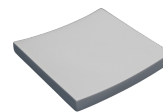
Pacifica Collection
100% Poly Resin Soap Dish
4.75" x 3.5" x 0.75"
BS-0307
\$5.85 Ea. / 140.45 Case of 24



Pacifica Collection
Square Poly Resin Soap Dish
4" x 4" x 0.75"
BS-0300
\$5.85 Ea. / \$140.45 Case of 24



Pacifica Collection
Large Poly Amenity Tray
11.25" x 5.25" x 1"
BS-0301
\$12.90 Ea. / \$103.20 Case of 8



Pacifica Collection
Concave Poly Soap Dish
4" x 4" x 0.75"
BS-0312
\$5.85 Ea. / \$140.45 Case of 24



Pacifica Collection
Small Poly Amenity Tray
7.5" x 3.5" x 0.875"
BS-0348
\$9.60 Ea. / \$115.20 Case of 12



Pacifica Collection
Poly Soap Pump
4.75" x 3.5"
BS-0339
\$12.60 Ea. / \$302.40 Case of 24





STOCK INVENTORY

DEL MAR BATH COLLECTION - COST EFFECTIVE MELAMINE



Del Mar Collection
Melamine Waste Bin
8.5" x 8.5" x 10.5"
WB-0310
Liner Sold Separately (WB-0304)
\$21.10 Ea. / \$168.60 Case of 8



Del Mar Collection
Melamine Tissue Cover
6.25" x 6.25" x 6"
BS-0333
\$9.10 Ea. / \$109.25 Case of 12



Del Mar Collection
Melamine Amenity Tray
4" x 10.5"
BS-0332
\$5.80 Ea. / \$139.15 Case of 24



Del Mar Collection
Melamine Soap Dish
4.75" x 3.5"
BS-0331
\$3.35 Ea. / \$161.25 Case of 48



Del Mar Collection
Melamine Waste Bin
8.5" x 8.5" x 10.5"
WB-0336
Liner Sold Separately (WB-0304)
\$21.10 Ea. / \$168.60 Case of 8



Del Mar Collection
Melamine Tissue Cover
6.25" x 6.25" x 6"
BS-0372
\$9.10 Ea. / \$109.25 Case of 12



Del Mar Collection
Melamine Amenity Tray
4" x 10.5"
BS-0371
\$5.80 Ea. / \$139.15 Case of 24



Del Mar Collection
Melamine Soap Dish
4.75" x 3.5"
BS-0370
\$3.35 Ea. / \$161.25 Case of 48





STOCK INVENTORY

VENTURA CLEAR SET - 100% POLY RESIN

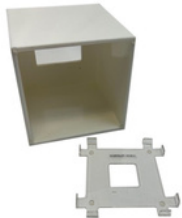


Clear Poly Resin Amenity Tray
10.5" x 4" x 0.5"
BS-0311
\$12.85 Ea. / \$154.20 Case of 12



Clear Poly Resin Soap Dish
4" x 4" x 0.5"
BS-0310
\$7.25 Ea. / \$87.00 Case of 12

UNIVERSAL BATH SET COMPONENTS



Tissue Box Pedestal, works with
Pacifica and Del Mar bath set
tissue covers, clear acrylic
4.75" x 4.75" x 0.375"
BS-0357
\$2.75 Ea. / \$66.00 Case of 24



Frosted Liner
8" x 8" x 9.5" Tapered
WB-0304
Fits WB-0300 & WB-0310
\$7.00 Ea. / \$56.00 Case of 8

LED & NON-LIT MAKEUP MIRRORS



Chrome Finish LED Mirror
15.5" x 8.5" x 6"
MM-0002
\$75.70 Each / \$302.80 Case of 4



Non-Lit Magnifying Mirror
8.25" x 5" x 12.5"
MM-0300
\$46.70 Each / \$373.60 Case of 8



Satin Brush Nickel LED Mirror
13" x 9" x 5.5"
MM-0003
\$66.80 Each / \$267.20 Case of 4





STOCK INVENTORY

ROOM ACCESSORIES



HH-0313
Natural Finish Universal Hanger
17.5 inch, chrome hardware, dowel
\$1.15 Each / \$57.75 Case of 50



Laundry Bag (Grey Embroidery)
16" x 22"
RB-0310
\$4.30 Each / \$154.50 Case of 50



HH-0312
Walnut Finish Universal Hanger
17.5 inch, chrome hardware, locking
\$1.80 Each / \$89.25 Case of 50



Toilet Paper Bag (Grey Embroidery)
8" x 8"
RB-0328
\$2.60 Each / \$130.00 Case of 50



HH-0318
Walnut Finish Universal/Women's Hanger
17.5 inch, chrome hardware, smooth clip
\$1.85 Each / \$92.95 Case of 50



Hair Dryer Bag (White Embroidery)
12" x 12"
RB-0322
\$2.95 Each / \$146.50 Case of 50



Hair Dryer Bag (Grey Embroidery)
12" x 12"
RB-0311
\$2.95 Each / \$146.50 Case of 50



Universal Notepad / Pen Holder
Black leatherette, magnetic back
Fits notepads up to 7" L x 6" W
Holder size 9" L x 8.25" W x 0.5"
RA-0306
\$18.15 Each / \$363.00 Case of 20



Closed Toe Slipper Set
Unisex, Drawstring Bag
RS-0305
\$2.00 Each / \$100.00 Case of 50





STOCK INVENTORY

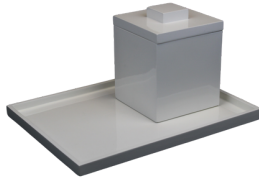
BAR & COFFEE SERVICE



Poly Resin Black Coffee Caddy
9.25" x 2.375" x 4.25"
RD-0001HSCC
\$17.65 Ea. / \$141.20 Case of 8



2Q Ice Bucket (no handle)
Satin Stainless Steel
BR-0300
\$24.60 Each / \$295.20 Case of 12



Pacifica Collection
Ice Bucket
6.25" x 6.25" x 6.5"
BR-0303
\$33.10 Each / \$132.40 Case of 4

Coffee Tray
16" x 12" x 0.875"
BR-0304
\$42.95 Each / \$343.70 Case of 8

Tray, Ice Bucket/Coffee
Satin Stainless Steel
17" x 11.25"
BR-0301
\$26.00 Each / \$312.00 Case of 12



Luxury 3Q Ice Bucket
Satin Stainless Steel
Use with BR-0301 Tray and BR-0302 Tongs
BR-0305
\$29.10 Each / \$174.60 Case of 6

Tongs 7"
Satin Stainless Steel
BR-0302
\$2.45 Each / \$352.80 Case of 144





STOCK INVENTORY

DISPOSABLE OPERATING SUPPLIES



Magnetic Key Cards
Magnetic Strip
Vintage Design
HK-0310
\$54.20 Case of 500



RFID Key Cards
Saflok, Milfare, Kaba Compatible
RFID-001
\$82.35 Case of 200



Magnetic Key Cards
Magnetic Strip
Aged Wood Design
HK-0309
\$54.20 Case of 500



RFID Key Cards
Aged Wood Design
RFID-012
\$79.80 Case of 200



Magnetic Key Cards
Beach Scene Design
HK-0323
\$52.50 Case of 500



RFID Key Cards
Beach Scene Design
RFID-011
\$79.80 Case of 200



Magnetic Key Cards
Pool Scene Design
HK-0324
\$52.50 Case of 500



Magnetic Key Cards
CR80-Welcome
\$54.20 Case of 500



Disposable Ice Bucket
Individually Wrapped
7.7" x 6"
84 Ounces
GH-0304
\$227.55 Case of 200



Generic Silver Twist Pen
P-0329
\$0.26 Each / \$126.80 Case of 500



Luxury Metal Twist Pen
P-0345
\$0.41 Each / \$204.75 Case of 500





STOCK INVENTORY

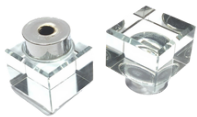
FURNITURE AND FIXTURES



Lampshade Finial
Crystal Ball
LL-0303
\$6.25 Each / \$62.50 Case of 10



Task Chair
CA117 Certified
20 W x 22.5 L x 36 inch
DC-0054AHG
\$157.00 Each



Lampshade Finial
Cube 1" x 1"
LL-0001BTL Finial
\$6.25 Each / \$62.50 Case of 10



Laptop Safe
16.5" x 7.9" x 14.5"
LS-0008
\$127.10 Each
*5 Year Warranty



Lampshade Finial
Crystal Cube
LL-0304
\$6.25 Each / \$62.50 Case of 10



Luxury Luggage Rack
27.6 L x 17.7 W x 21.7 H inch
4 Nylon Strap
LR-0012
\$80.35 Each



Lampshade Finial
Gold Fleur Di Lis
LL-0305
\$4.30 Each / \$43.00 Case of 10



Closet Organizer, black
11.5" x 5.25"
Plastic/metal w/ mounting hardware
RA-0310
\$9.80 Each / \$117.60 Case of 12



Lampshade Finial
Stainless Fleur Di Lis
LL-0306
\$4.30 Each / \$43.00 Case of 10



Closet Organizer, white
11.5" x 5.25"
Plastic/metal w/ mounting hardware
RA-0313
\$9.80 Each / \$117.60 Case of 12





STOCK INVENTORY

PPE



Pop-Up Reusable Insta-Bin
13 Gallon - Standard size garbage bags
WB-0325
\$3.95 Each (\$98.75 Case of 25) @1+
\$3.85 Each (96.25 Case of 25) @5+



PPE Notepads
5.5 H x 4.25 W inch / 10 sheets
Individually wrapped
HK-0307
\$98.60 Case of 500



Touchless Sanitizer Station
D: 10.6" W x 15.7" L x 59" H
PP-0319
\$75.10 Each



Transparent Pen Sleeve
6.5" x 1"
PP-0317
\$42.25 Case of 2000

